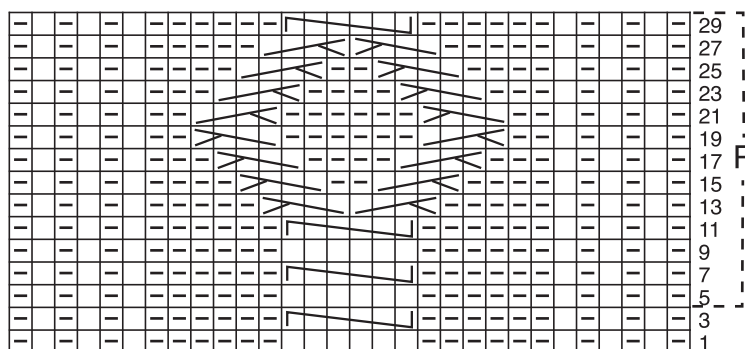




# No. 67 WOMAN AUTUMN / WINTER

## Correction Model 43

Graph A



Graph A

On alternate rows work sts as they appear.

R Repeat

□ Knit

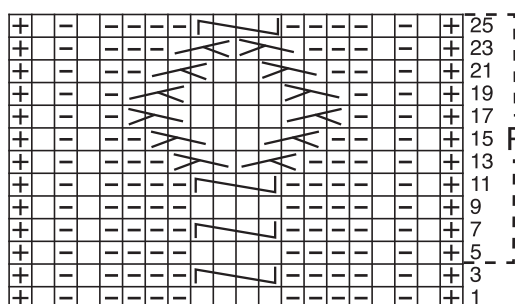
- Purl

⌋ Slip 3 sts to a cable needle, hold in front, K3; K3 from cable needle.

⌋ Slip 1 st to a cable needle, hold in back, K3; P1 from cable needle.

⌋ Slip 3 sts to a cable needle, hold in front, P1; K3 from cable needle.

Graph B



Graph B

On alternate rows work sts as they appear.

R Repeat

□ Knit

- Purl

⌋ Slip 2 sts to a cable needle, hold in front, K2; K2 from cable needle.

⌋ Slip 1 st to a cable needle, hold in back, K2; P1 from cable needle.

⌋ Slip 2 sts to a cable needle, hold in front, P1; K2 from cable needle.

+ On right side of work, K1; on the next wrong side row slip this st.