

# COTTON-MERINO

OTOÑO-INVIERNO / AUTUMN-WINTER / AUTOMNE-HIVER /  
HERFST-WINTER / HERBST - WINTER / AUTUNNO-INVERNO

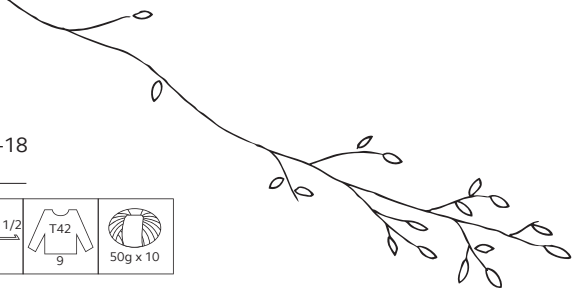
2017-18

70% Algodón / Coton / Cotton / Baumwolle / Katoen / Cotone  
30% Merino Extrafine (Lana / Laine / Wool / Wolle / Wol)

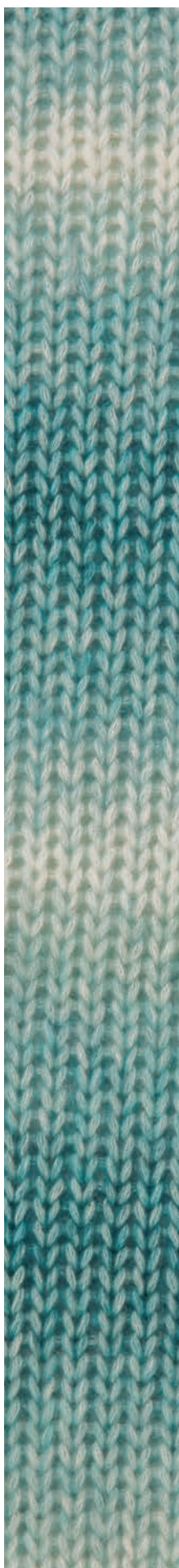
*merino*  
*extrafine*

							USA 7-8 4 1/2 - 5	10x10 cm 4 1/2 x 23 16	Metric 4 1/2 US 7		
										T42 9	50g x 10

±50 gr. - 1 oz 3/4 ±105 mts. - 115 yds



300



301



302



303



200



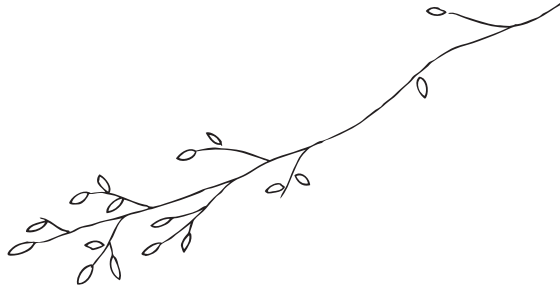
205



206



207



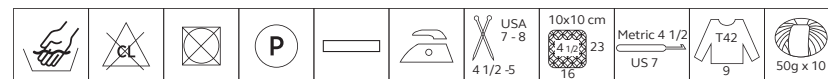
# COTTON-MERINO

OTOÑO-INVIERNO / AUTUMN-WINTER / AUTOMNE-HIVER /  
HERFST-WINTER / HERBST-WINTER / AUTUNNO-INVERNO

2017-18

70% Algodón / Coton / Cotton / Baumwolle / Katoen / Cotone  
30% Merino Extrafine (Lana / Laine / Wool / Wolle / Wol)

*merino*  
*extrafine*



±50 gr. - 1 oz 3/4 ±105 mts. - 115 yds

