

L13 Sewing Pattern - Sweatshirt and T-shirt - Part 1

Kafka

Legend:

sizes / tallas / tailles / taglie/ maten/ Größen	symbols / símbolos / symboles / simboli / symbolen / symbole
12-18m:	GRABLINE / RECTO-HILO / DRIST FL / DRISTFOLIO / RECHTSTRAAK / FAZERNICHTUNG
18-24m:	CUT ON FOLD / COÛTAR A LOMO / COUPURE AU PLI / TAGLUNG SULLA PIESA / AFKNIPPEN OP VOUW / AN DER FALTLINIE SCHNEIDEN
2-3y:	BUTTON / BOTÓN / BOUTON / BOTTONI / KNOPF / KNÖPF
3-4y:	BUTTONHOLE / GUAL / BOUTINIÈRE / ABSOL / KNOPFSATZ / KNOPFLOCH
	NOTCH / APLOMO / GRAB / MARCA / INKPNIG / EINSCHNITT

Additional Information:

Seit 2019 sind die Größen für Kinder und Jugendliche in cm angegeben.
 Measurements are given in centimeters (cm) only.
 Misure sono indicate in centimetri (cm) solo.
 Măsurătorile sunt în centimetri (cm) numai.
 Einheiten sind in Zentimetern (cm) angegeben.
 Einheiten sind in Zentimetern (cm) angegeben.

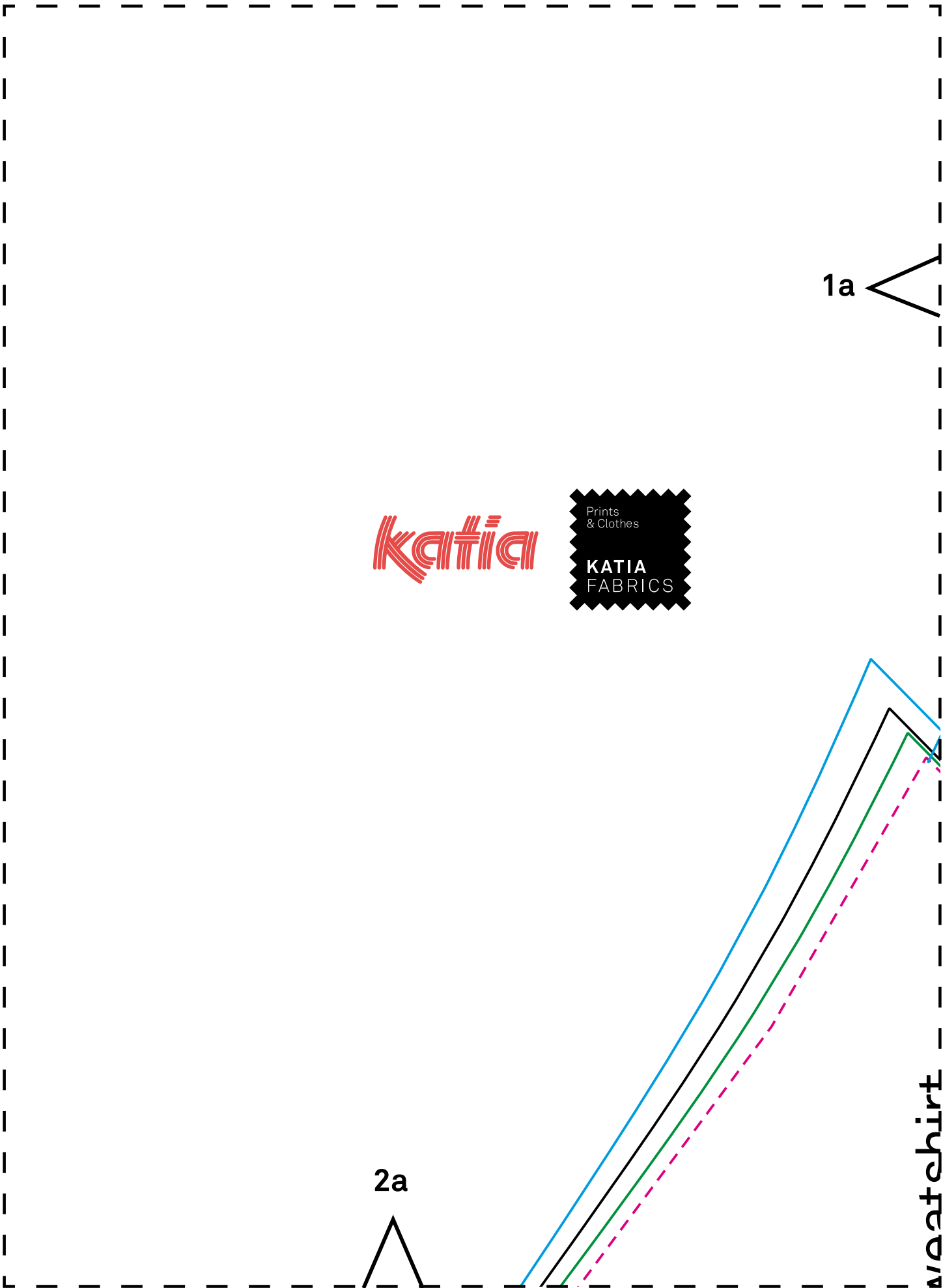
Pattern Pieces:

- sweatshirt X14 FABRIC 1
- sweatshirt waistband X1 FABRIC 1
- sweatshirt pocket X2 FABRIC 1
- sweatshirt hood X2 FABRIC 1 - X2 FABRIC 2
- sweatshirt sleeve X2 FABRIC 1
- sweatshirt front X2 FABRIC 1
- sweatshirt back X1 FABRIC 1

Labels and Markings:

- 1a, 1b, 1c, 1a
- 2a, 2a, 2b, 2b, 2c, 2c, 2d, 2d, 2e, 2e
- 3a, 3a, 3b, 3b, 3c, 3c, 3d, 3d, 3e, 3e
- 4a, 4a, 4b, 4b, 4c, 4c, 4d, 4d, 4e, 4e
- 5a, 5a, 5b, 5b, 5c, 5c, 5d, 5d

#2419-L13
 Sweatshirt and T-shirt/
 Sweatshirt T-shirt/
 Sweatshirt und T-shirt/
 Falpa e T-shirt/
 Sweat-shirt en T-shirt/
 Sweatshirt en T-shirt/



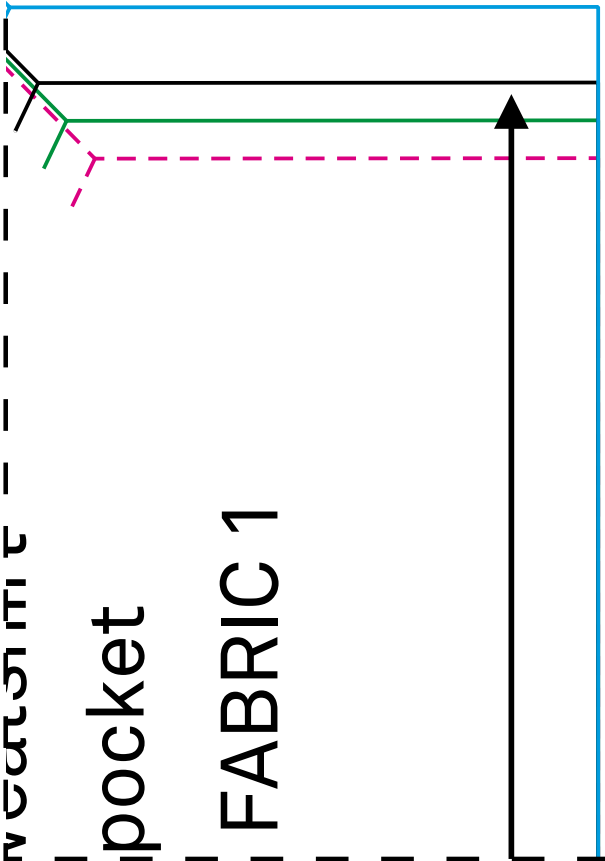
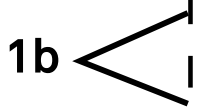
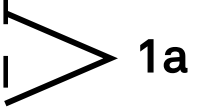
Katja

Prints
& Clothes
KATIA
FABRICS

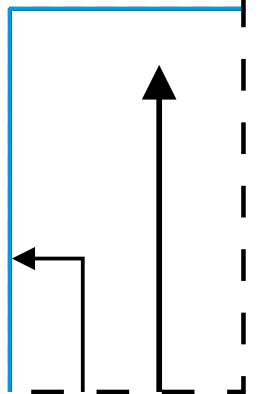
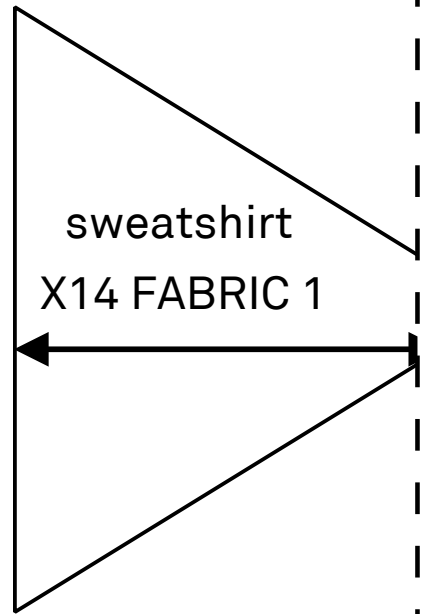
1a

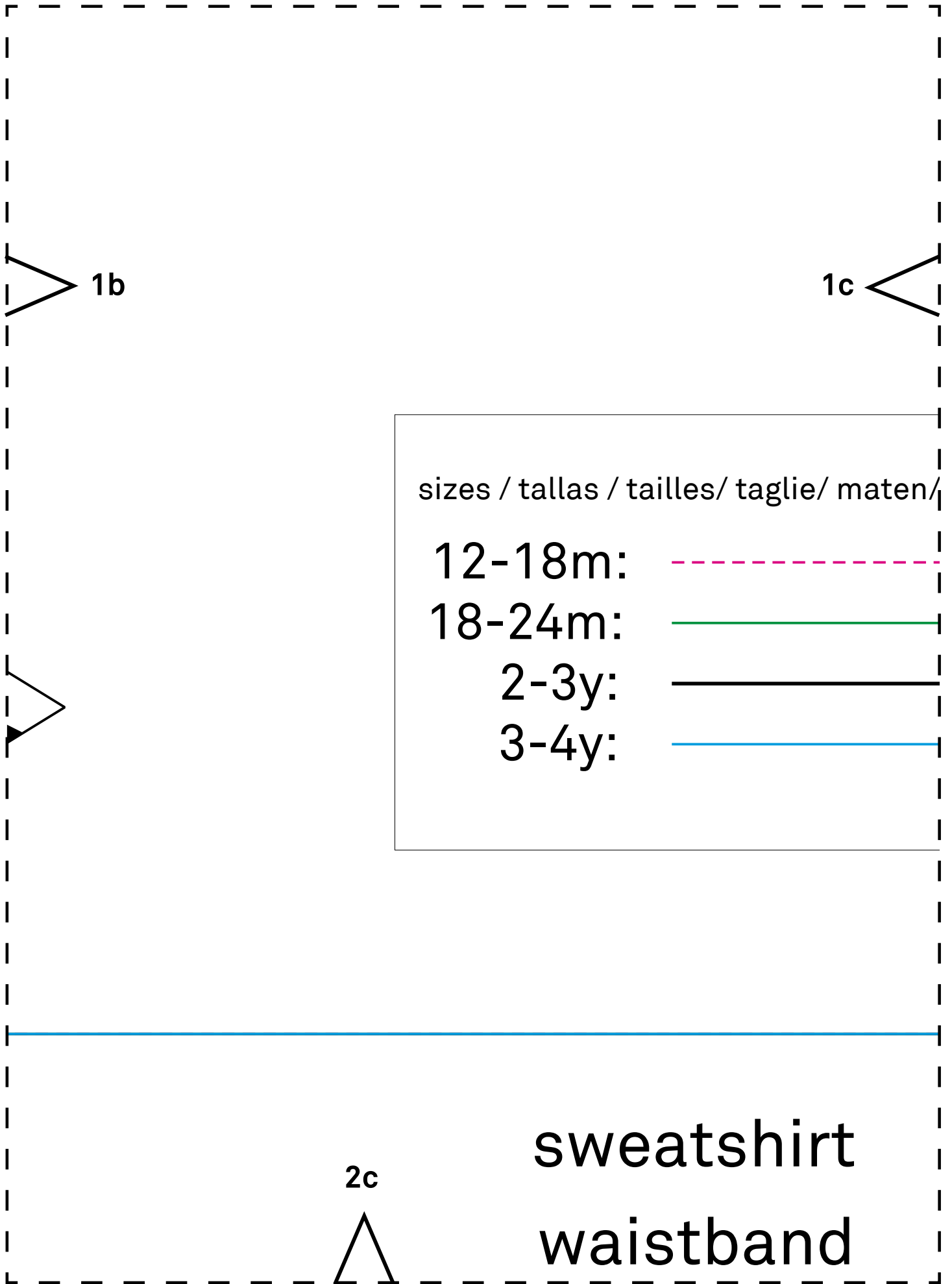
2a

waistband



2b





1b

1c

sizes / tallas / tailles/ taglie/ maten/

12-18m:



18-24m:



2-3y:



3-4y:

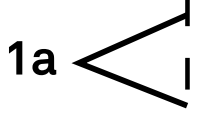
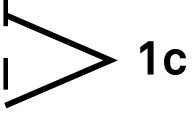


2c



sweatshirt

waistband

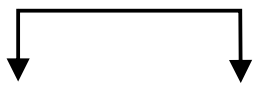


größen

symbols / símbolos / symboles / simboli / symbolen /



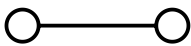
GRAIN LINE / RECTO HILO / DROIT FIL / DRITTOFILO / RECHTE



CUT ON FOLD / CORTAR A LOMO / COUPER AU PLI / TAGLIARE
AFKNIPPEN OP VOUW / AN DER FALTLINIE SCHNEIDEN



BUTTON / BOTÓN / BOUTON / BOTTONE / KNOOP/ KNOPF



BUTTONHOLE / OJAL/ BOUTINNIERE / ASOLA/ KNOOPSGAT/ K

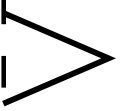


NOTCH / APLOMO / CRAN / MARCA / INKEPING/ EINSCHNITT

Seam allowance included (1cm)
Màrgenes de costura incluido:
Valeur de couture incluse (1cm)
Margini di cucitura inclusi (1 cm)
Naadwaarden inbegrepen (1 cm)
EinschieBlich Nahtzugabe (1cm)

2d





1a

simbole

DRAAD / FADENRICHTUNG

SULLA PIEGA/

NOPFLOCH

2e



#2419-L13

Sweatshirt and T-shirt

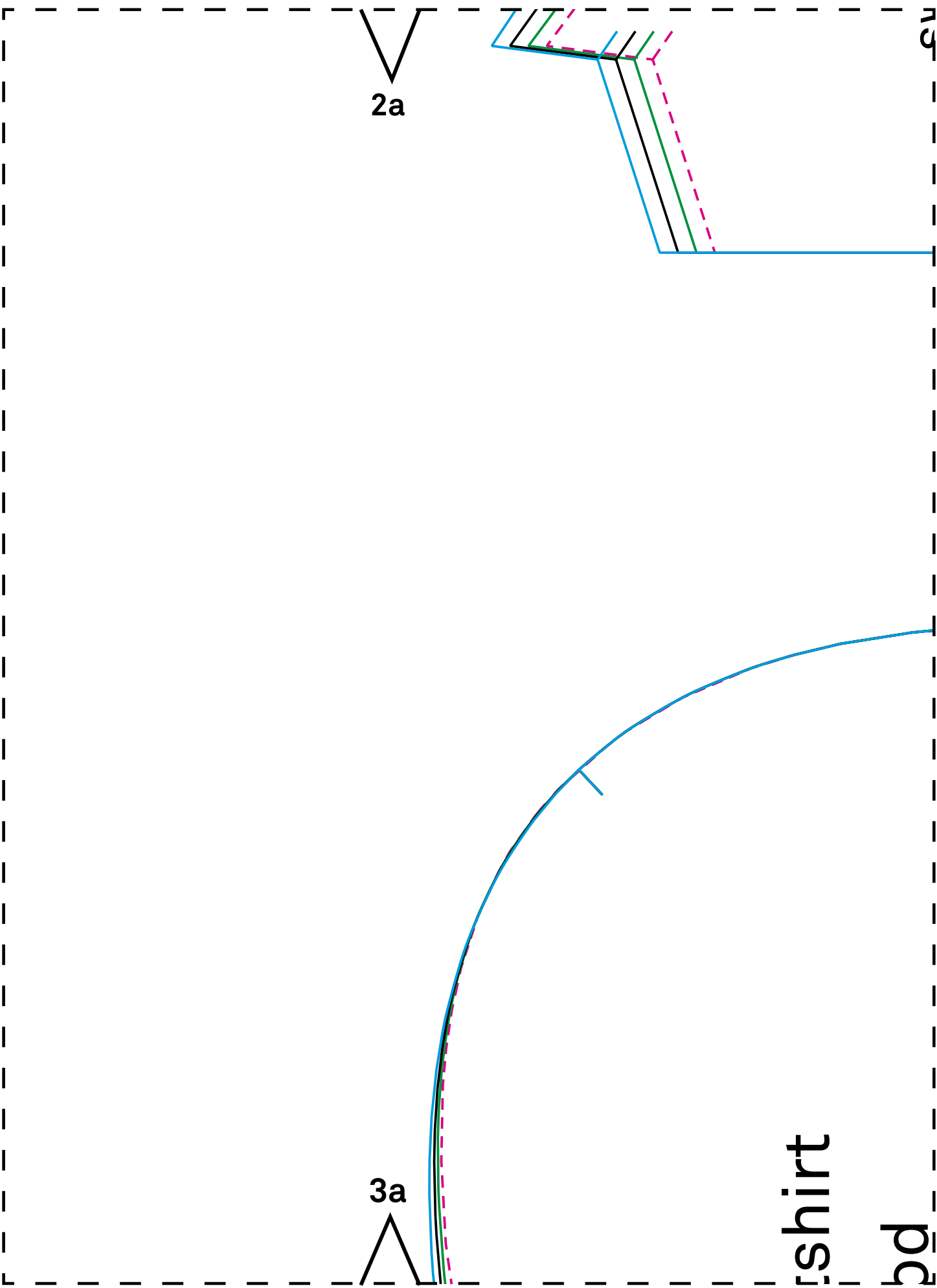
Sudadera y T-shirt/

Sweatshirt und T-Shirt

Felpa e T-shirt/

Sweat-shirt et tee-shirt

Sweatshirt en T-shirt



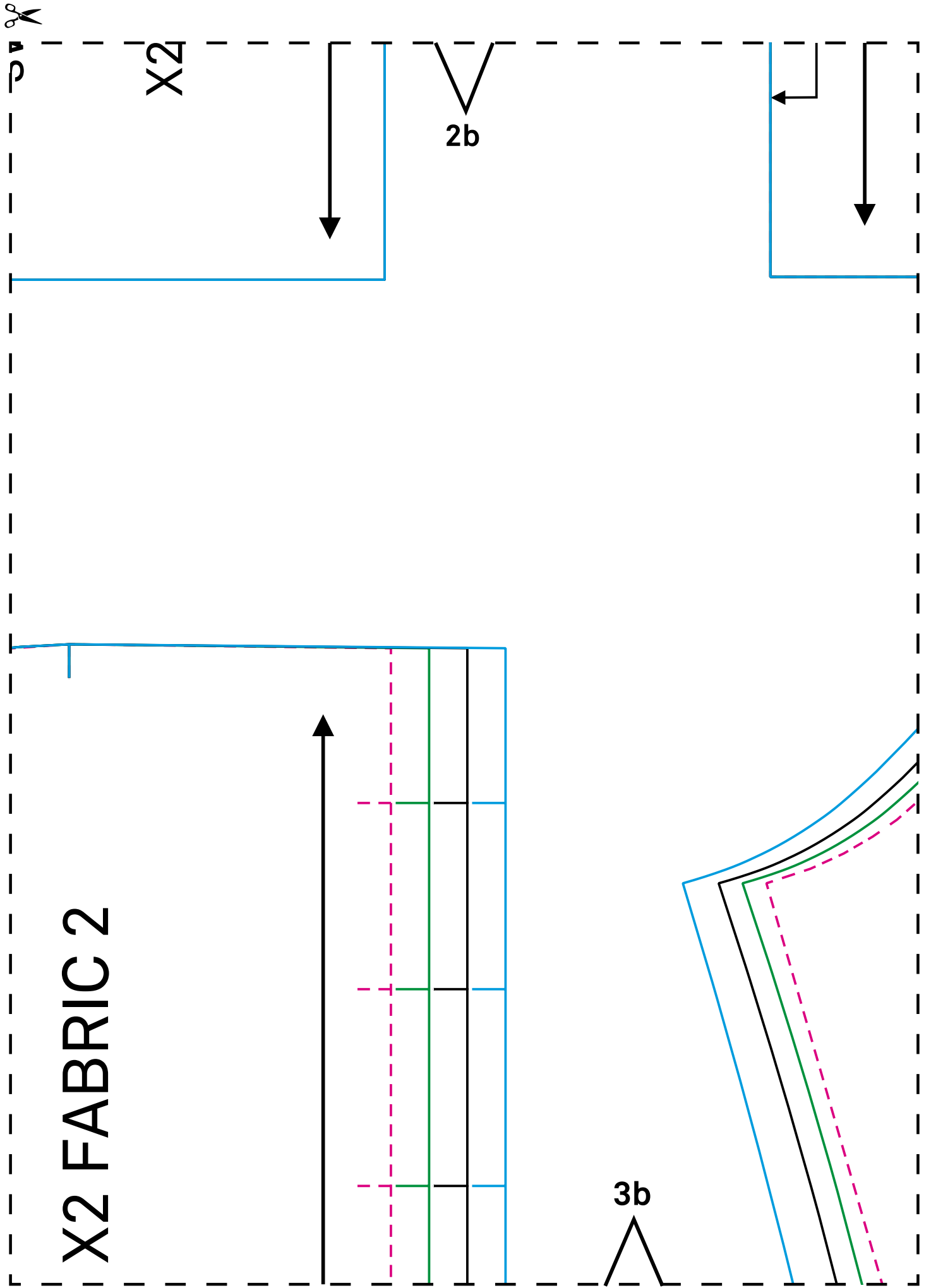
2a

3a

shirt

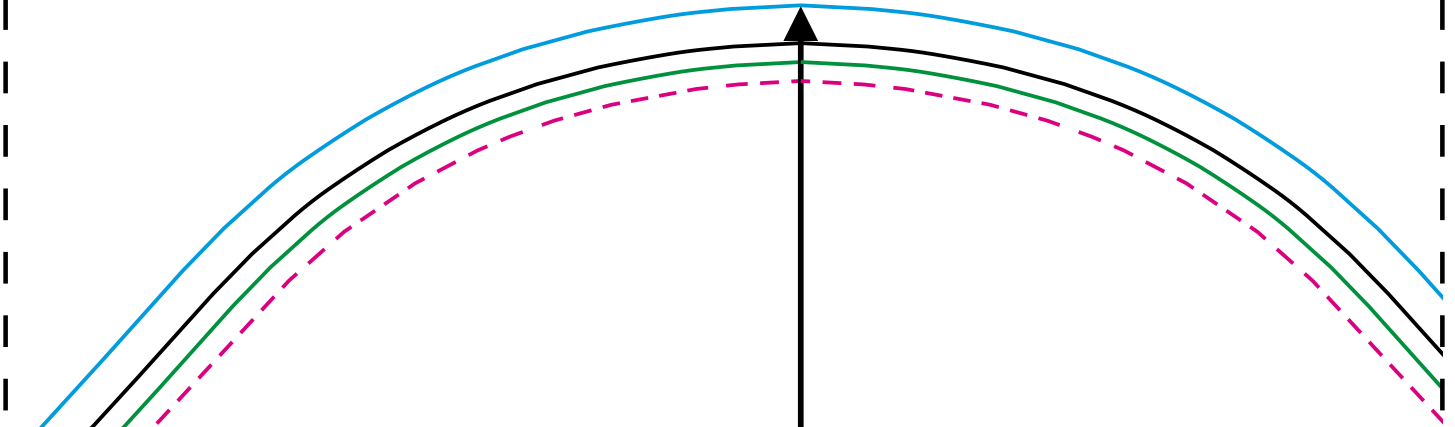
bd

cu





X1 FABRIC 1



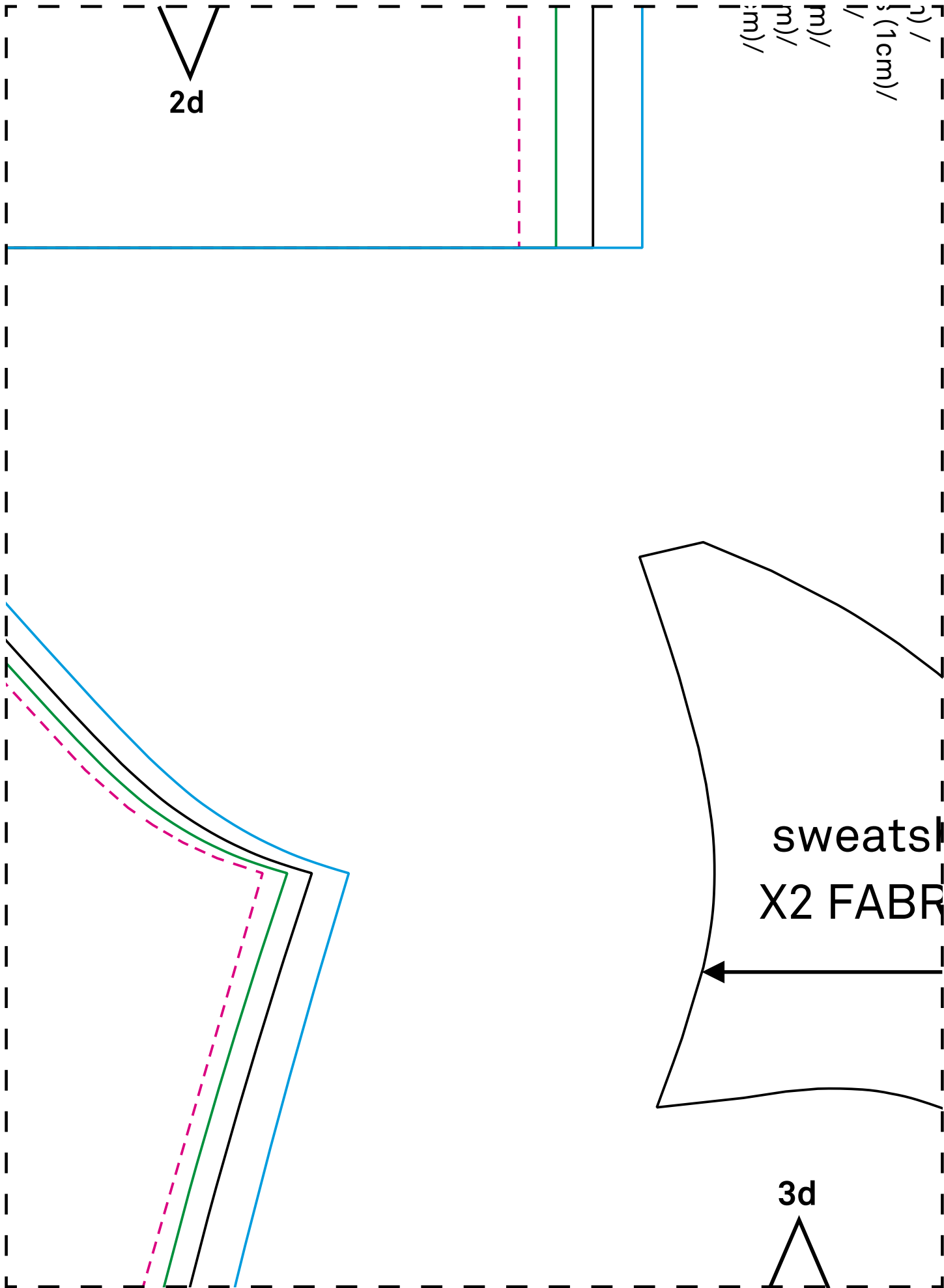
tshirt

ve

FABRIC 1

3c







ft/

hshirt/

nirt/

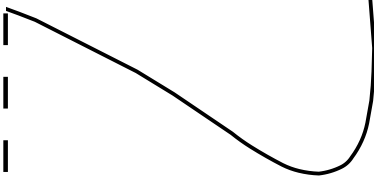
jirt/



2e

hirt

IC 1



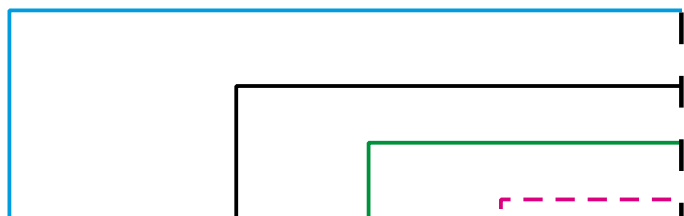
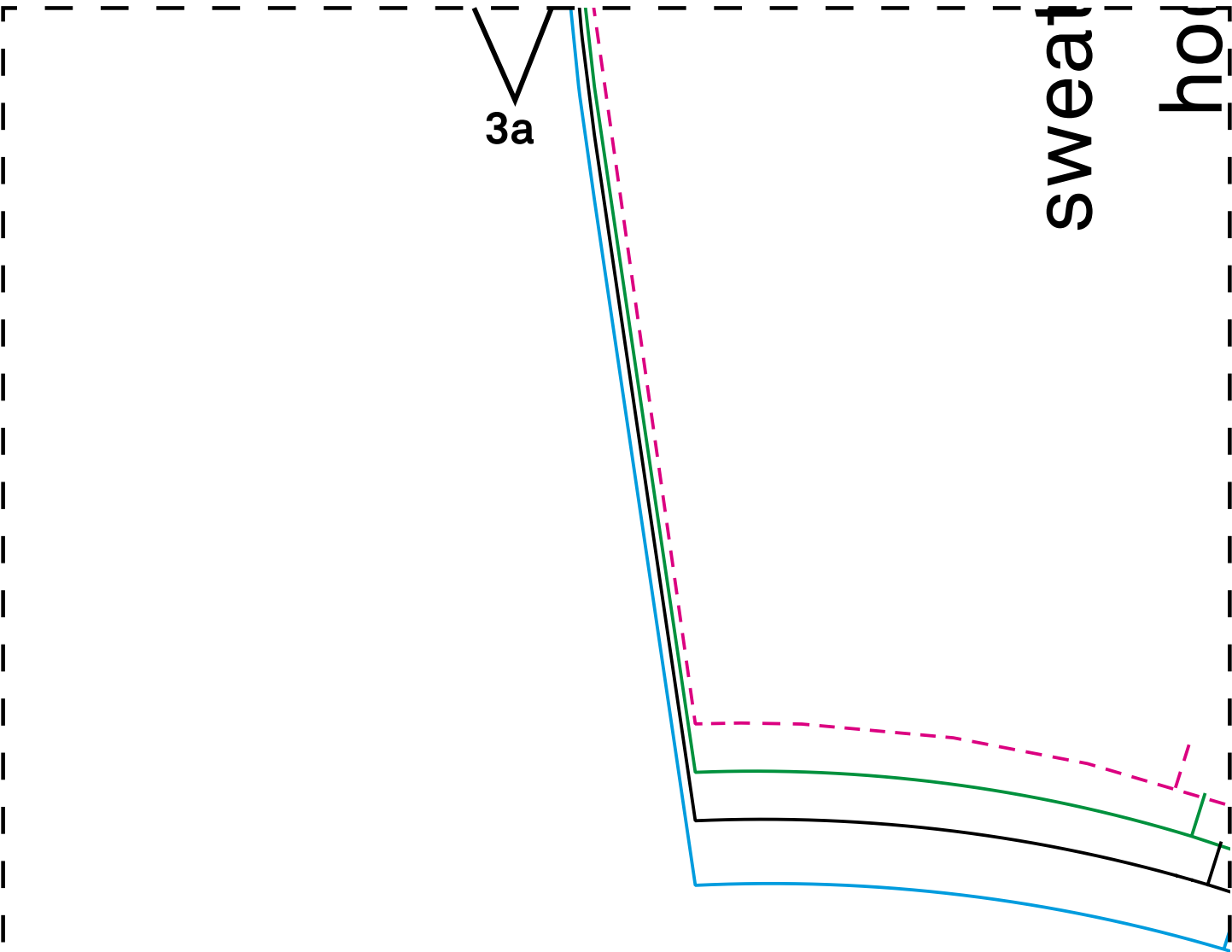
3e





sweat

hood

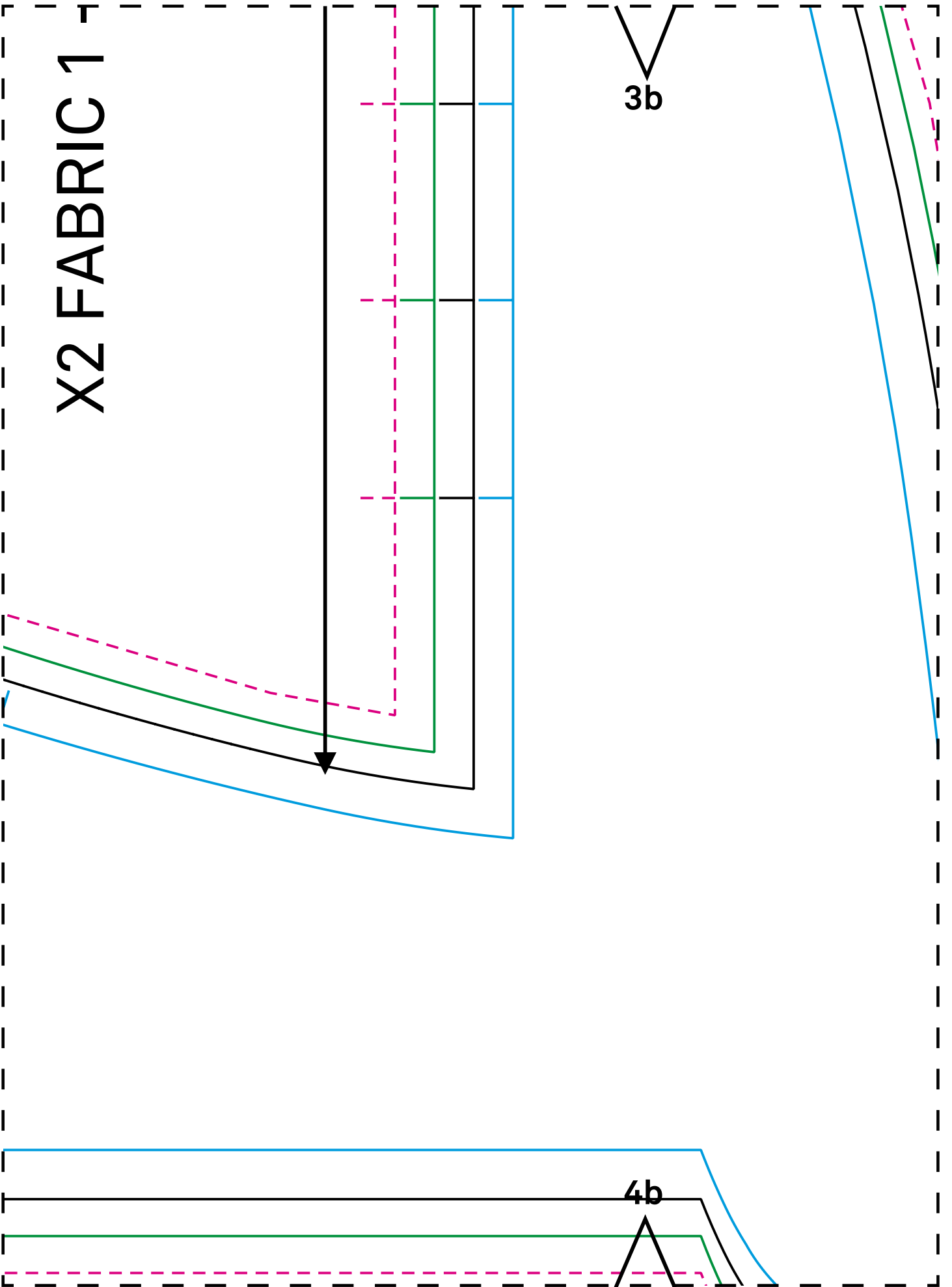


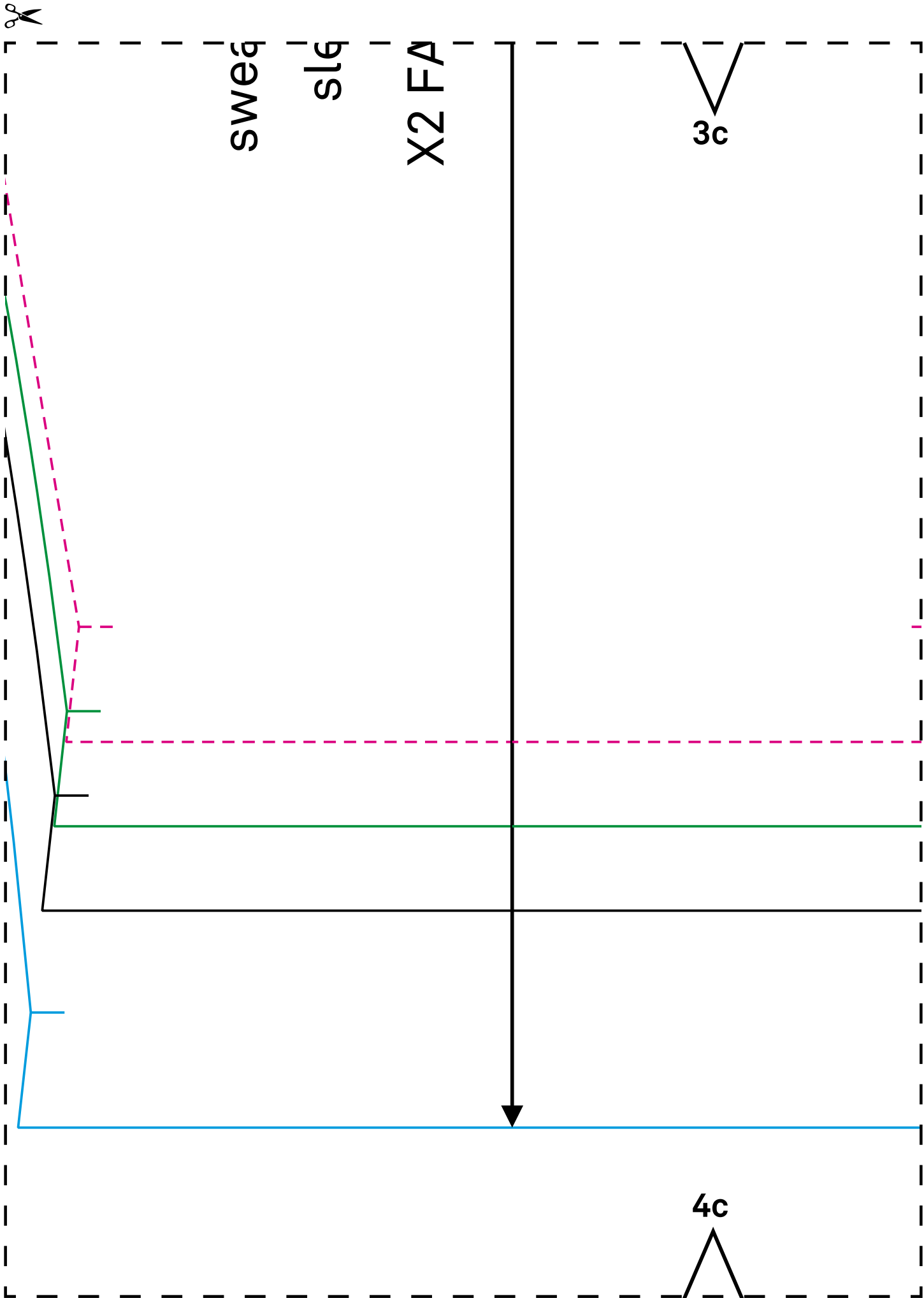


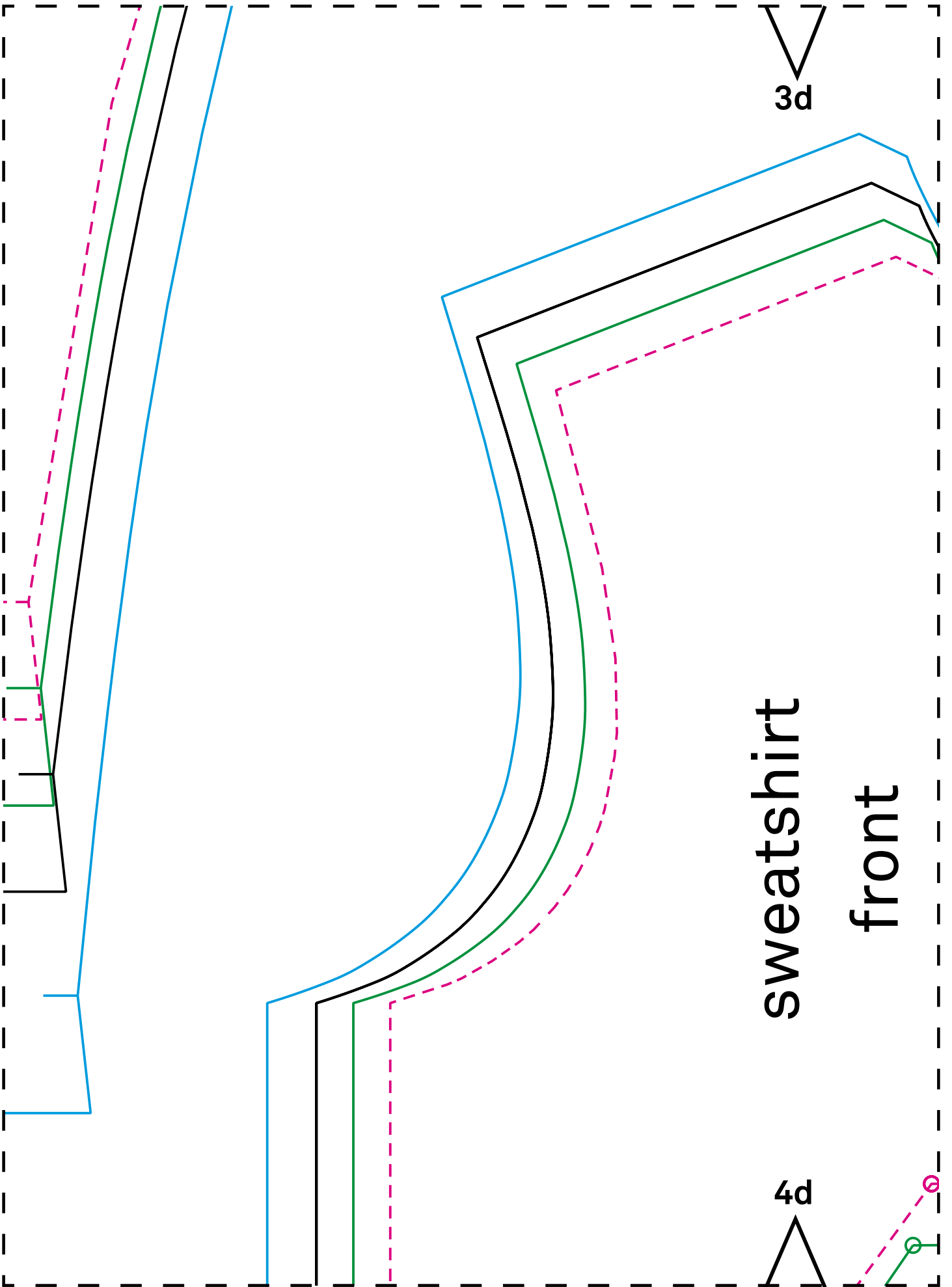
X2 FABRIC 1

3b

4b





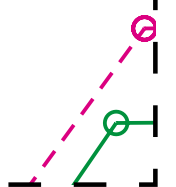


3d

sweatshirt

front

4d

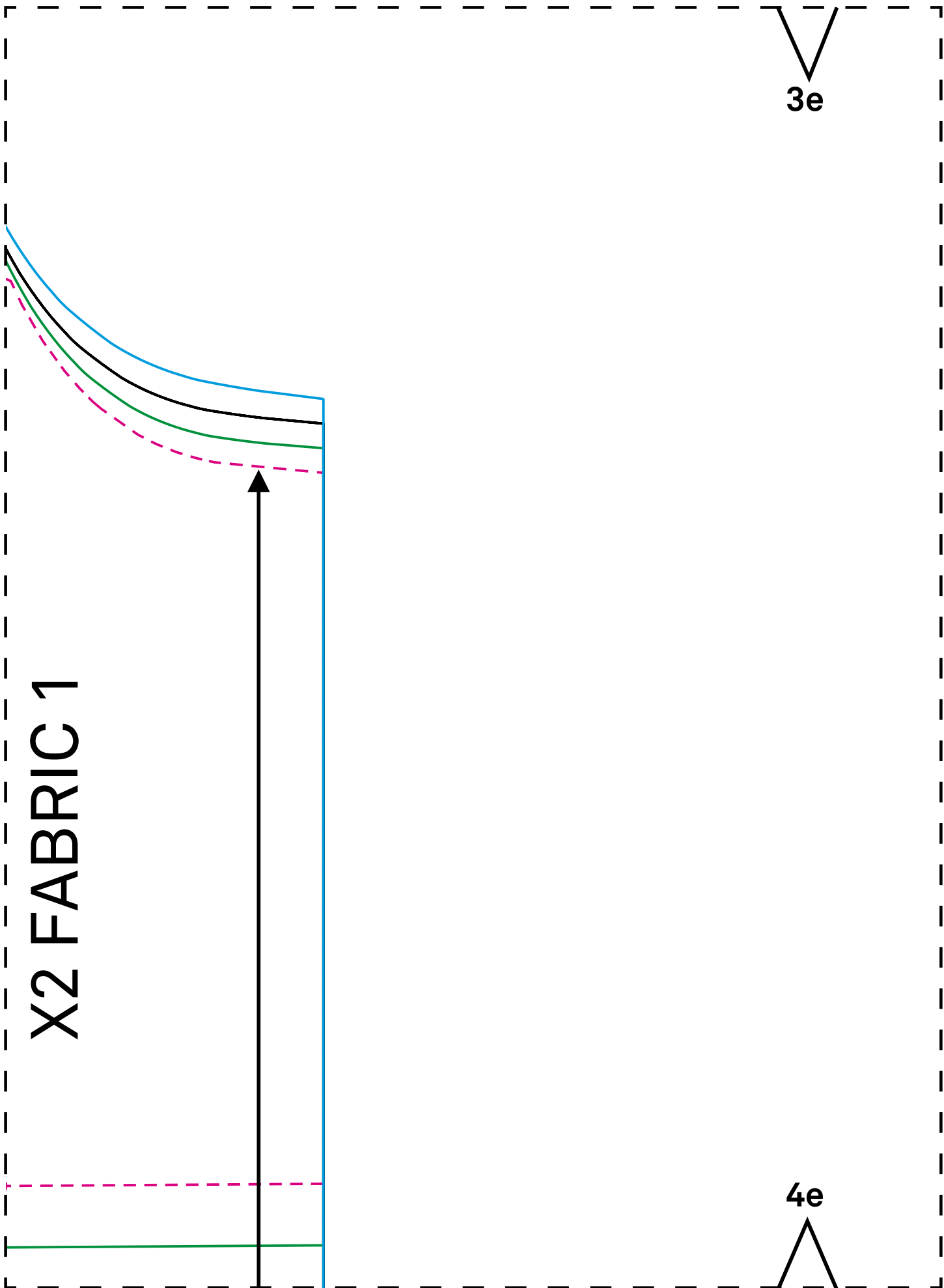


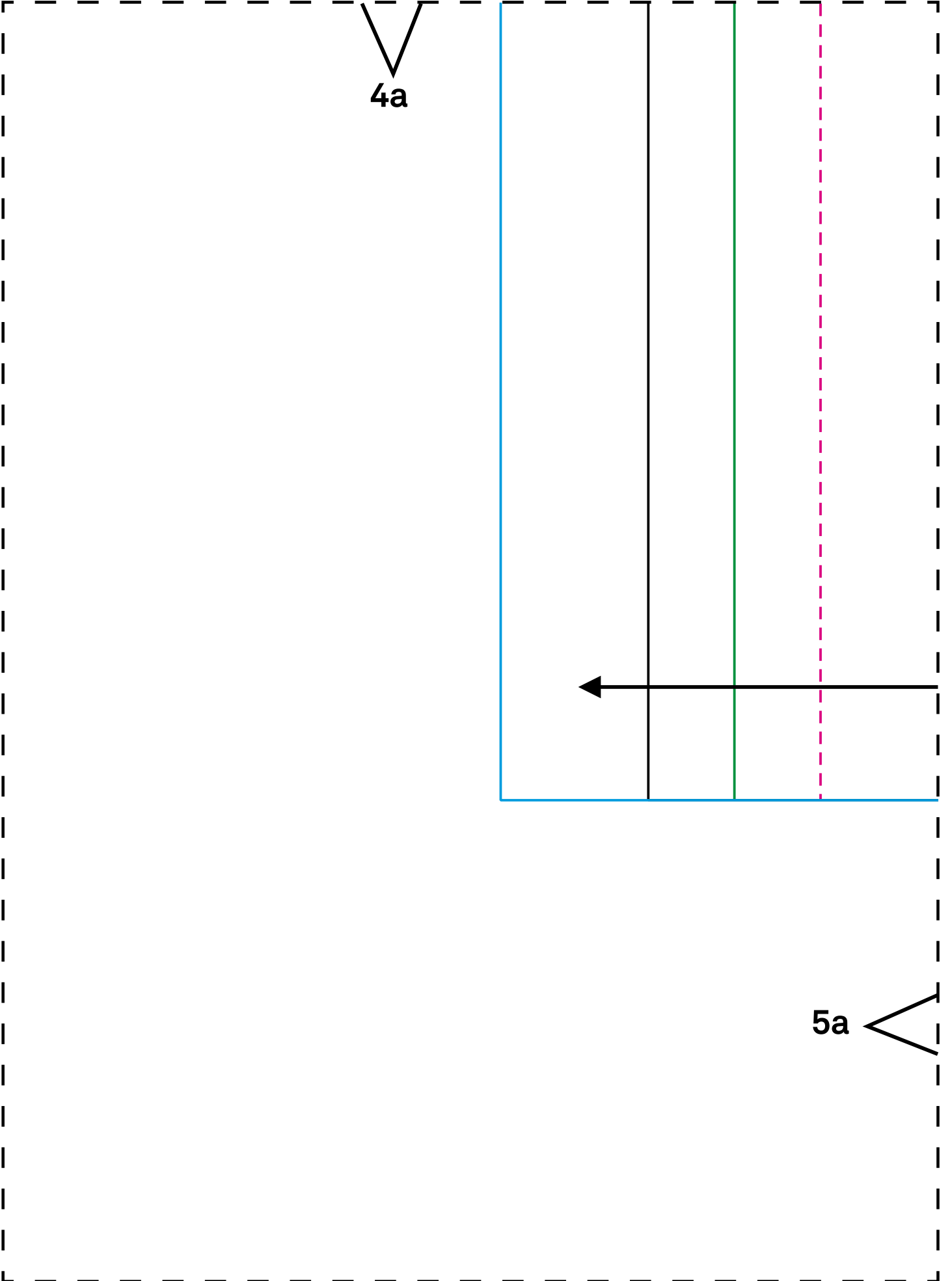


3e

X2 FABRIC 1

4e



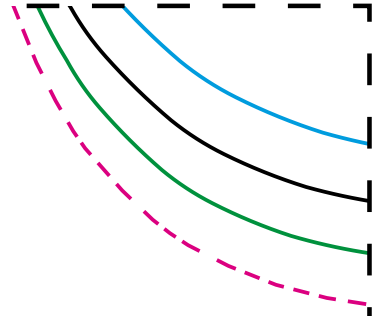


4a

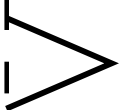
5a



4b

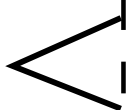


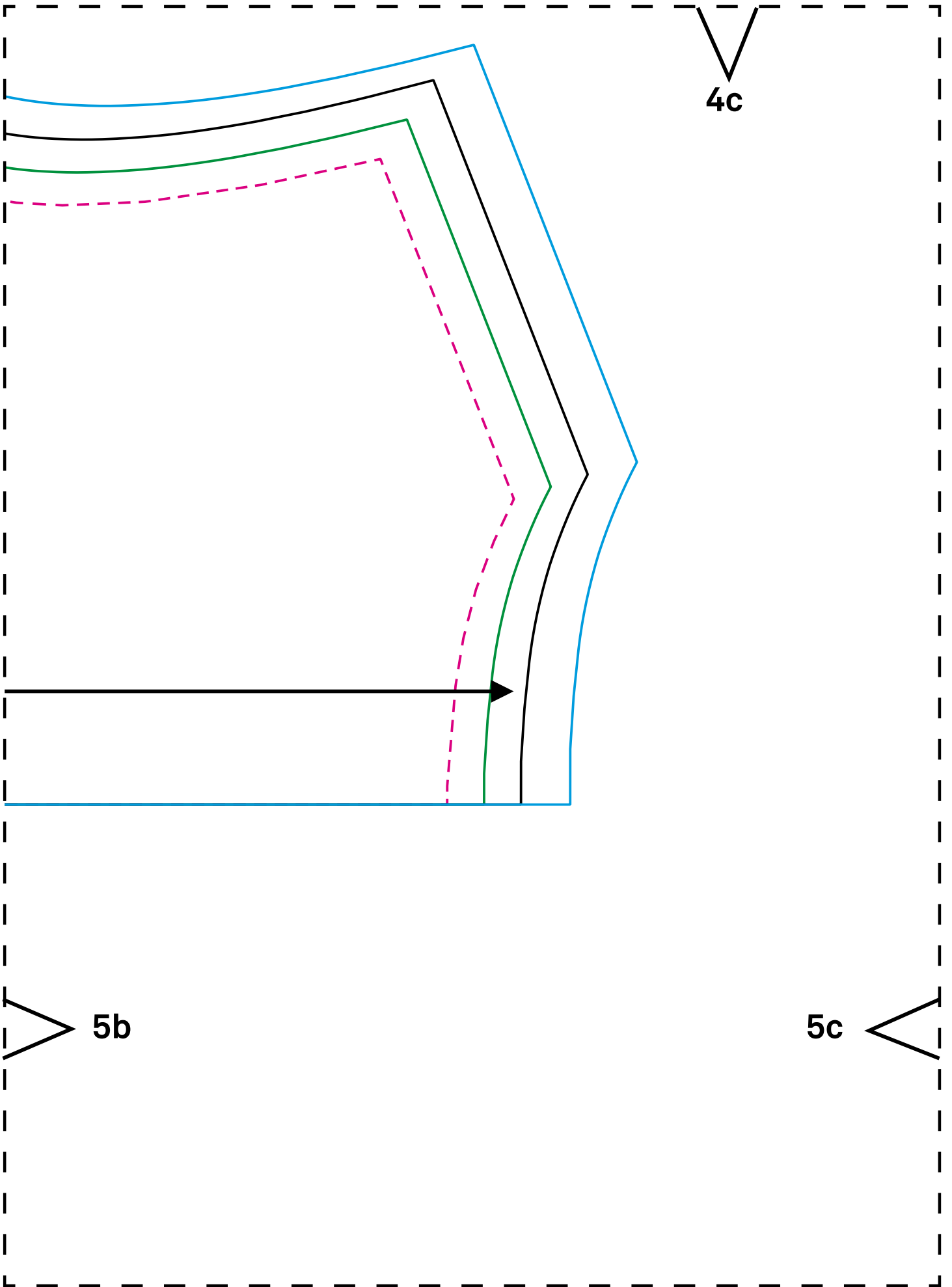
sweatshirt
back
X1 FABRIC 1



5a

5b

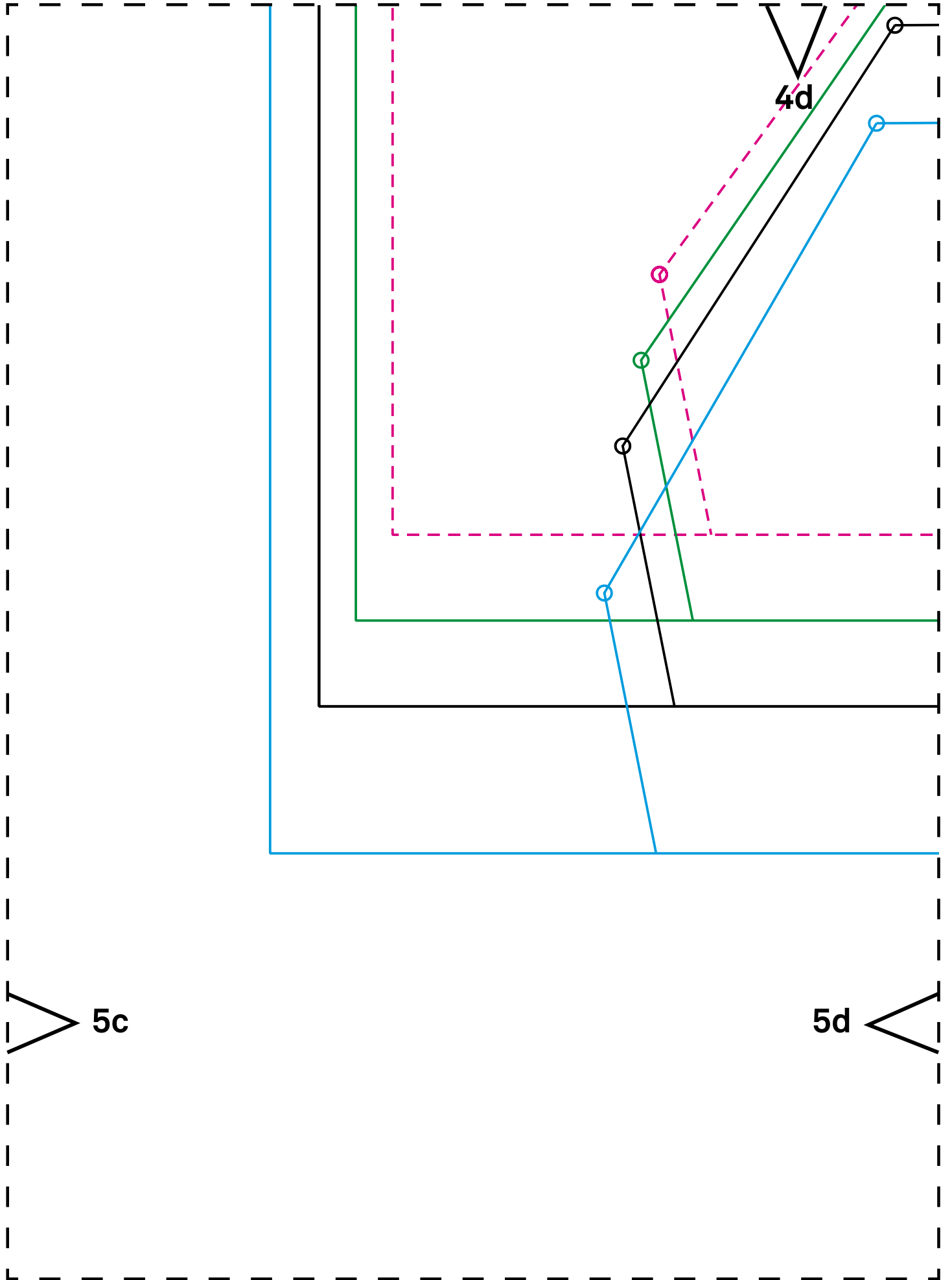




4c

5b

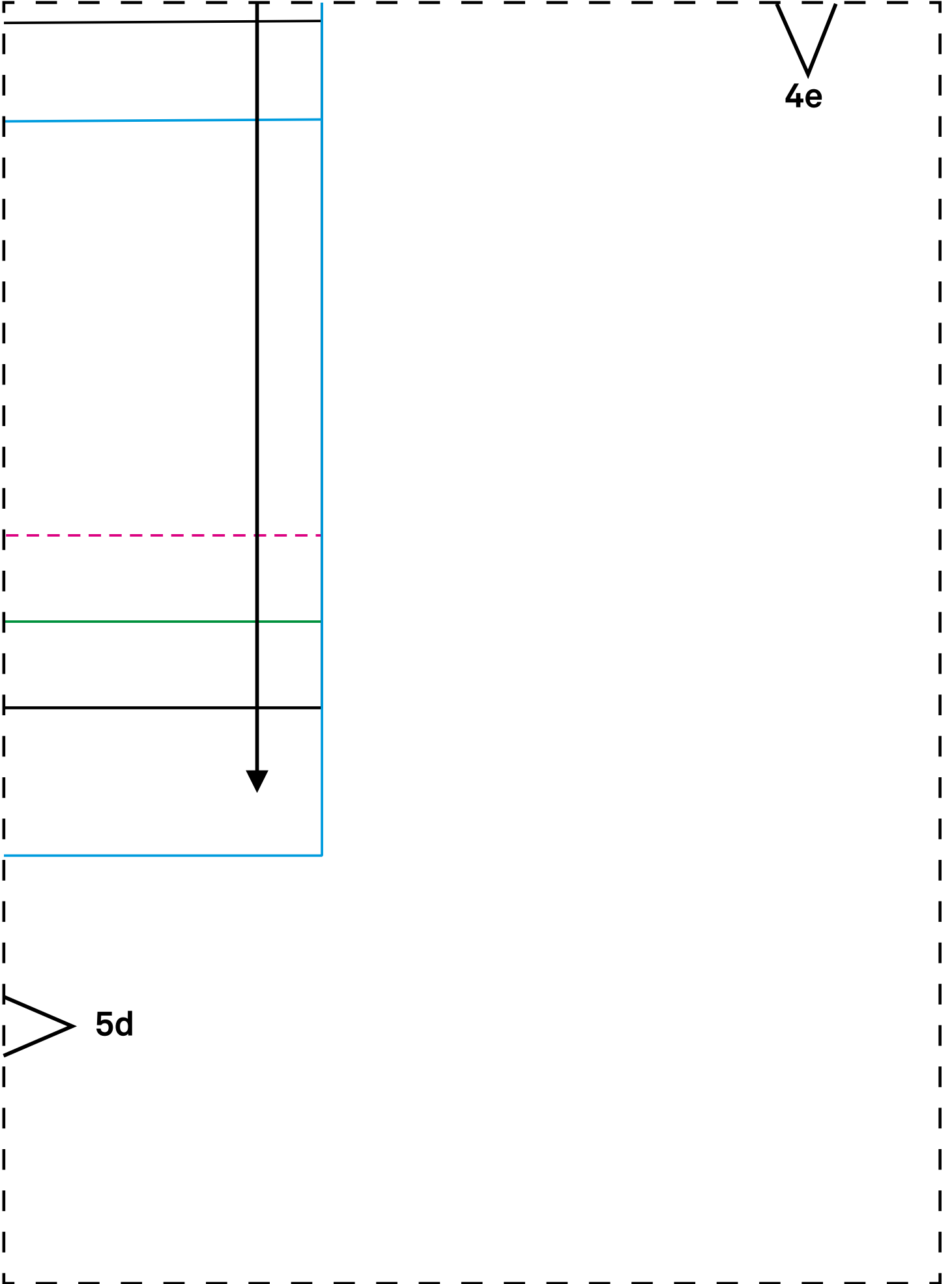
5c



4d

5c

5d



4e

5d